



# MALIHOM

VENUE HIRE FACT SHEET

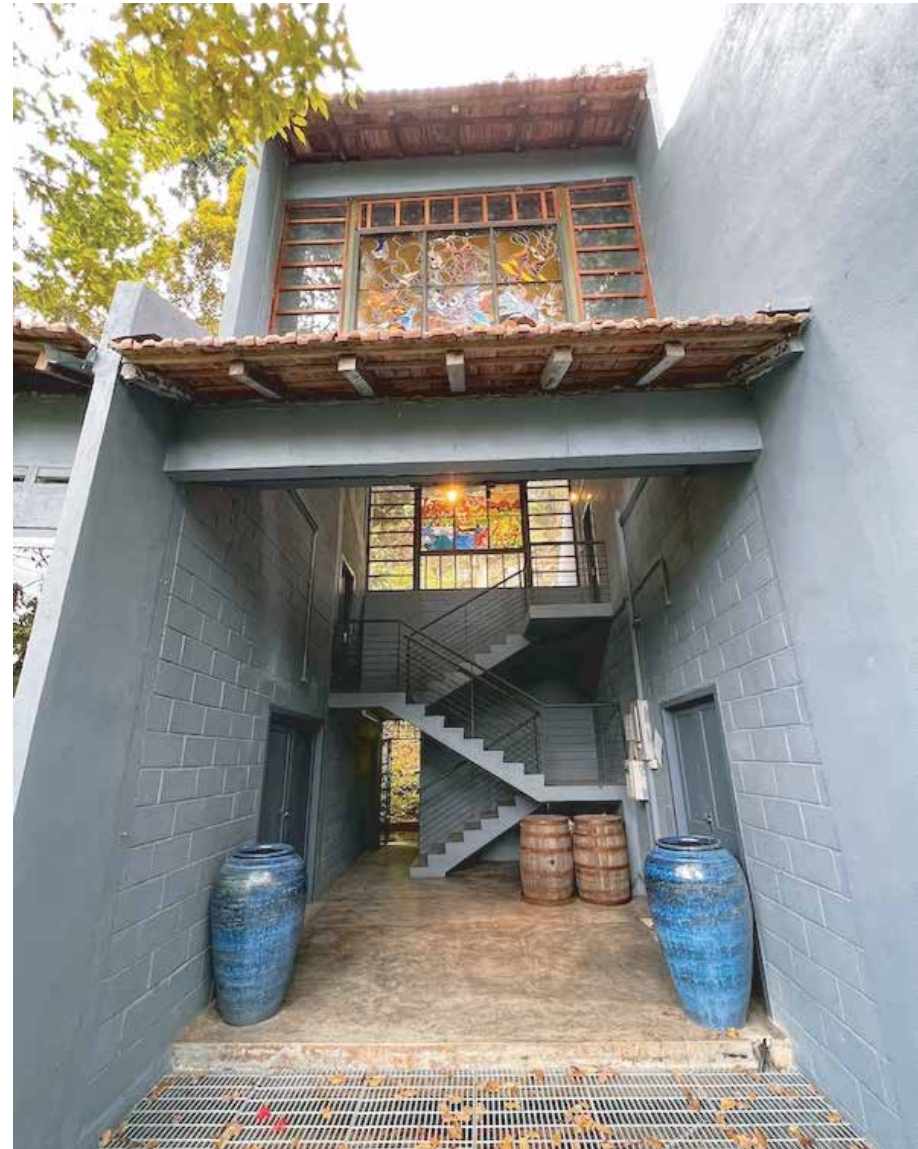
## THE GALLERY

The Gallery is a multipurpose event space located at the foothill of Malihom. Originally designed as an artist gallery, this space is ideal for workshops, classes, product launches, photo shoots, team building, private dinners, rustic weddings and corporate events.

This versatile venue is easily adaptable to any layout and allows you to add your own personal touches.

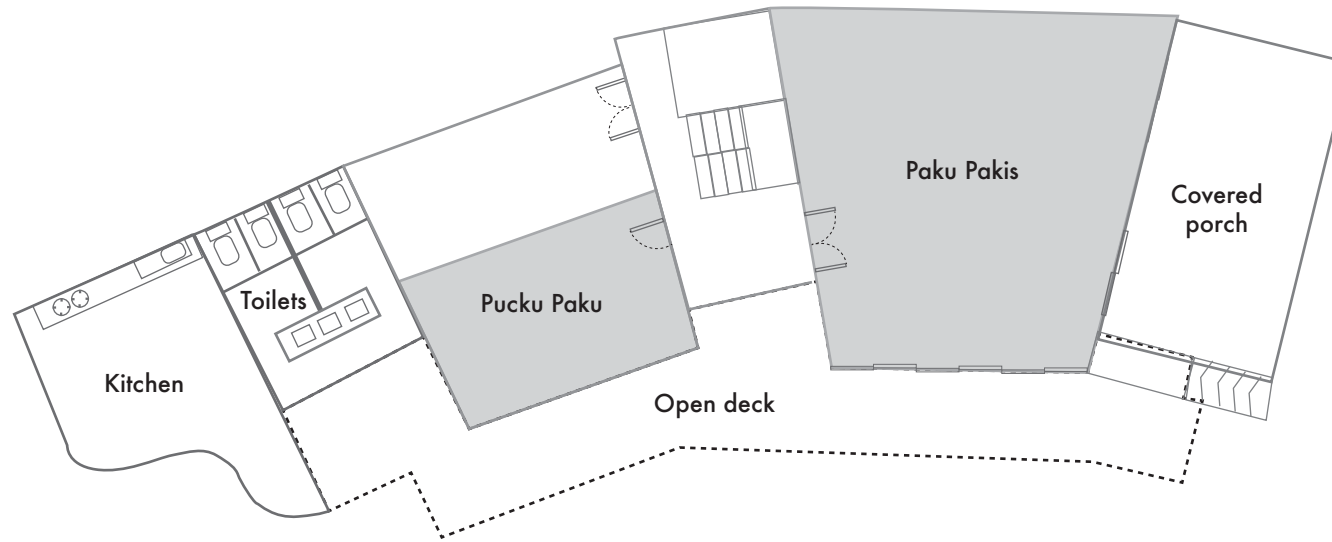
Another option for you to host your event is the Sculpture Garden located next to the Gallery. The garden features a series of sculptures by Japanese artist, Katsumi Mukai. The garden is perfect for outdoor hospitality events such as weddings, performances and cocktail receptions.

The Gallery provides you with WiFi, toilet facilities and a prep area for catering services.



# The Gallery

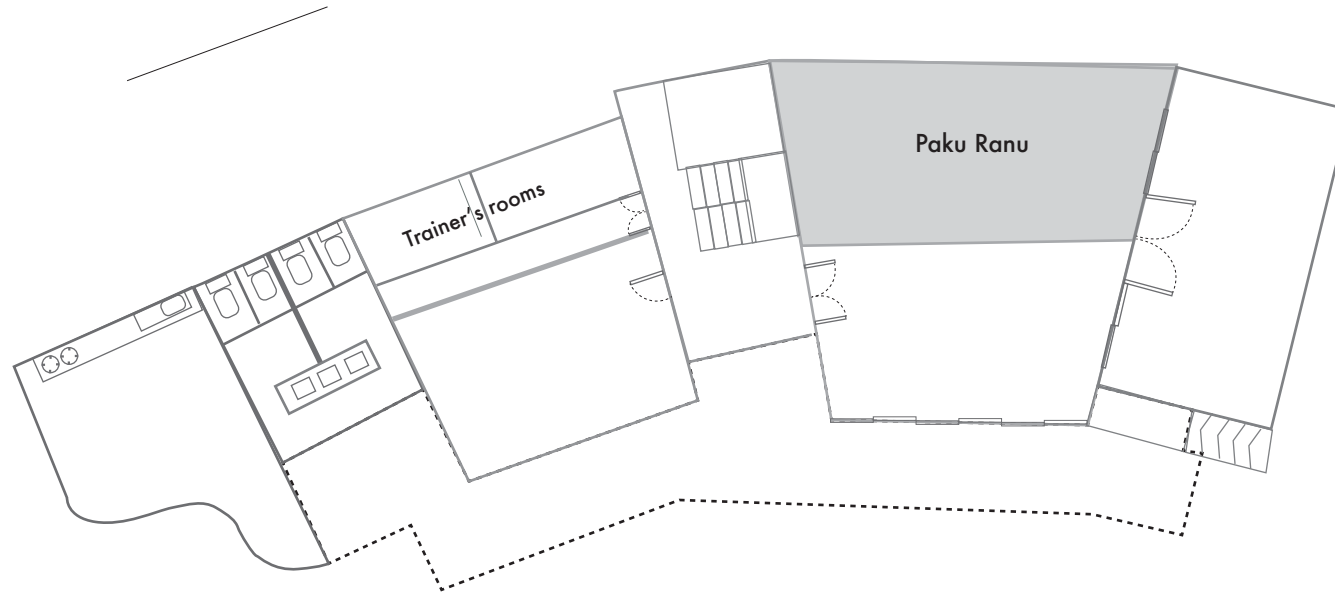
## Ground floor



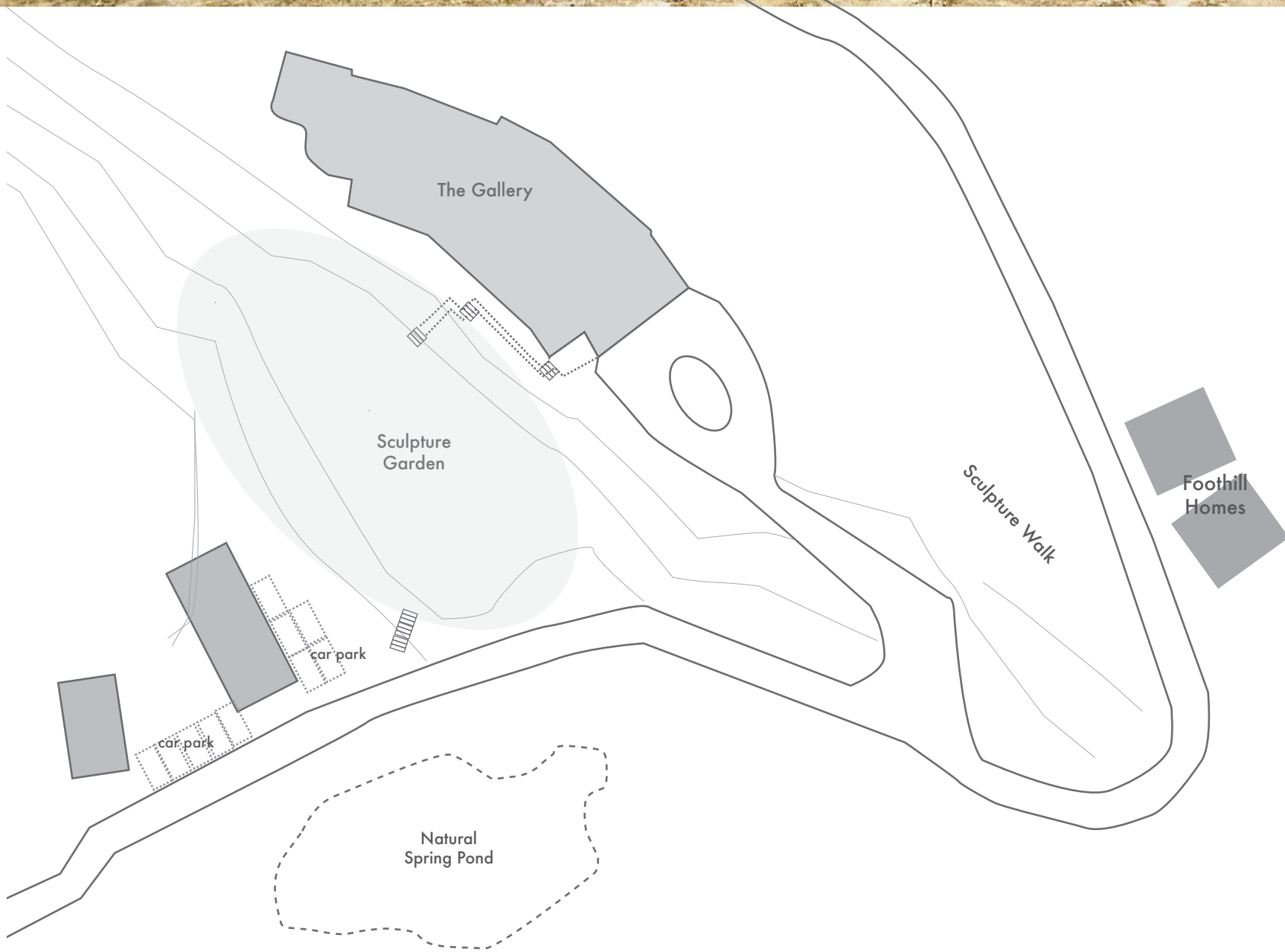
Rooms	Dimension (ft)	Size (ft)	Celing Height (ft)	Capacity				
				Banquet	Theatre	Classroom	U Shape	Boardroom
Paku Pakis	30 x 33	984	12	70	80	60	40	10 +10
Pucuk Paku	18 x 22	403	10	10	10	6	-	16

# The Gallery

First floor



Rooms	Dimension (ft)	Size (ft)	Celing Height (ft)	Capacity				
				Banquet	Theatre	Classroom	U Shape	Boardroom
Paku Ranu	19 x 32	631	11	50	30	24	30	20



Map of Foothill





Pucuk Paku



Paku Ranu



Sculpture Garden



# OTHER FACILITIES

## RUSTIC PROP HIRE

- \* Timber benches
- \* Cut log
- \* Glass jars
- \* Drapes
- \* Wine barrels
- \* Vintage easel & blackboard
- \* Vintage timber doors
- \* Wheel barrows
- \* Rustic table & chairs
- \* Large BBQ grill

## ONSITE ACCOMMODATION

We offer two types of accommodation that sleeps up to 40 people.

Accommodation	Units	Capacity	Type
Hilltop Barns	8	up to 18	B&B or Fullboard
Foothill Homes	4	up to 22	Airbnb style

## Inquiries

[reservation@malihom.com](mailto:reservation@malihom.com)  
[malihom.reservation@gmail.com](mailto:malihom.reservation@gmail.com)  
phone: +60124285191

